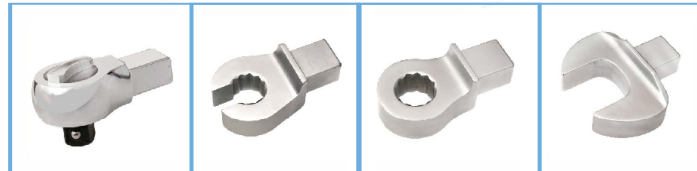


# Micrometer Adjustable (Click) Torque Wrenches, Head Holder, Metal Handle, Metric and English Models

## Metric

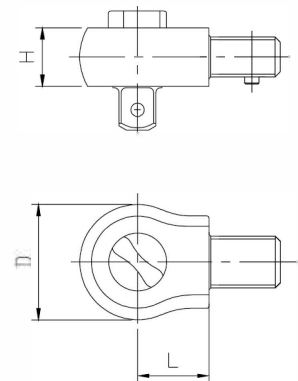
Part#	Shank Size	Torque Range		Length mm	Width mm	Weight kg
		N.m	Lb.ft			
<b>GMH9125</b>	<b>9X12</b>	25-125	20-90	<b>427</b>	<b>38</b>	<b>0.94</b>
GMH14200	<b>14X18</b>	40-200	30-150	460	38	1.06
<b>GMH14335</b>	<b>14X18</b>	65-335	50-250	<b>520</b>	<b>38</b>	<b>1.20</b>
GMH24500	<b>24X32</b>	100-500	80-400	855	56	5.00
<b>GMH24800</b>	<b>24X32</b>	160-800	120-600	1055	56	5.90
GMH241000	24X32	200-1000	150-750	1055	56	5.90
<b>GMH271500</b>	<b>27X36</b>	300-1500	<b>200-1100</b>	1249	<b>64</b>	<b>9.00</b>
GMH272000	27X36	400-2000	300-1500	1249	64	9.00
<b>GMH273000</b>	<b>27X36</b>	600-3000	400-2000	1249	<b>64</b>	<b>10.30</b>

- All-steel construction.superb durability.
- Permanently stamped major and minor scales for precision torque values setting.
- Minor scale with minimum 1/10th resolution.
- Convenient English major reference scale for Metric models and vice versa.
- Rectangular shank head holders: 9x12mm, 14x18mm, 24x32mm and 27x36mm accommodate different types and sizes of heads for varied applications.
- +/-4% Accuracy in clockwise direction from 20% to 100% Max. Torque.
- Pull to unlock lock ring keeps selected torque secure from accidental change.
- Grooved non-slip grip fits comfortably in your hand.



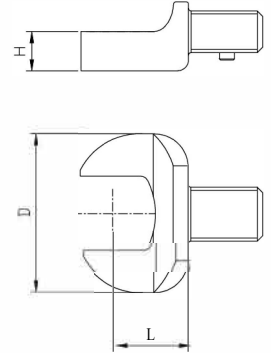
## Square Drive Ratchet Head (can reverse for clockwise and counter-clockwise direction)

Part#	Drive	Shank Size	L	H	D	Weight g	Max. Torque N.m
			mm	mm	mm		
DH9120	1/4"	9x12	17.5	15	28	90	20
DH9125	1/4"	9x12	17.5	20	37	135	25
DH92160	3/8"	9x12	17.5	20	38	160	160
DH93160	1/2"	9x12	17.5	20	38	160	160
DH143420	1/2"	14x18	25	20	40	265	420
DH144420	3/4" *	14x18	25	20	40	305	420
DH2441200	3/4"	24x32	35	32	60	1040	1200
DH2451200	1" *	24x32	35	32	60	1140	1200
DH2753000	1"	27x36	50	42	72	1720	3000



## Metric

	Size	Size	L mm	H mm	D mm	Weight g	Max. Torque Nm
OH94	4	9x12	17.5	4	22	35	2
OH95	5	9x12	17.5	4	22	35	4
OH95.5	5.5	9x12	17.5	5	22	38	5
OH96	6	9x12	17.5	5	22	38	6
OH97	7	9x12	17.5	5	22	38	9
OH98	8	9x12	17.5	5	22	37	13
OH99	9	9x12	17.5	5.5	26	44	18
OH910	10	9x12	17.5	5.5	26	43	24
OH911	11	9x12	17.5	5.5	26	12	32
OH912	12	9x12	17.5	7	30	48	41
OH913	13	9x12	17.5	7	30	47	51
OH914	14	9x12	17.5	8	35	58	63
OH915	15	9x12	17.5	8	35	57	77
OH916	16	9x12	17.5	8	38	56	92
OH917	17	9x12	17.5	8	38	54	109
OH918	18	9x12	25*	8	42	80	125
OH919	19	9x12	25*	8	42	75	115
OH920	20	9x12	25*	8	48	90	160
OH921	21	9x12	25*	8	50	100	160
OH922	22	9x12	25*	8	50	95	160
OH923	23	9x12	25*	8	53	100	160
OH924	24	9x12	25*	8	53	110	160
OH925	25	9x12	25*	8	53	110	160
OH926	26	9x12	25*	8	53	110	160
OH927	27	9x12	30*	8	64	140	160
OH928	28	9x12	30*	8	68	142	160
OH929	29	9x12	30*	8	68	142	160
OH930	30	9x12	35*	8	70	145	160
OH932	32	9x12	35*	8	70	115	160
OH933	33	9x12	35*	8	75	145	160
OH934	34	9x12	35*	8	80	145	160
OH935	35	9x12	35*	8	80	145	160
OH936	36	9x12	40*	8	80	145	160
OH937	37	9x12	45*	8	81	145	160
OH938	38	9x12	45*	8	82	145	160
OH939	39	9x12	45*	8	83	145	160
OH941	41	9x12	45*	8	85	145	160
OH942	42	9x12	50*	8	90	160	160
OH943	43	9x12	50*	8	100	165	160
OH944	44	9x12	50*	8	100	165	160
OH945	45	9x12	50*	8	100	165	160
OH946	46	9x12	50*	8	100	165	160
OH948	48	9x12	50*	8	104	175	160
OH949	49	9x12	50*	8	106	175	160
OH950	50	9x12	55*	8	106	175	160
OH951	51	9x12	55*	8	106	175	160
OH952	52	9x12	55*	8	110	175	160
OH953	53	9x12	55*	8	112	175	160
OH955	55	9x12	55*	8	116	175	160
OH960	60	9x12	60*	8	121	215	160
OH965	65	9x12	65*	8	126	225	160
OH967	67	9x12	65*	8	128	225	160
OH990	90	9x12	90*	8	165	300	160
OH146	6	14x18	25	7	32	120	6
OH147	7	14x18	25	7	32	120	9
OH148	8	14x18	25	7	32	120	13
OH149	9	14x18	25	7	32	118	18
OH1410	10	14x18	25	7	32	116	24
OH1411	11	14x18	25	7	32	114	32
OH1412	12	14x18	25	7	32	112	41
OH1413	13	14x18	25	7	32	110	51
OH1414	14	14x18	25	8	35	116	63
OH1415	15	14x18	25	8	35	115	77
OH1416	16	14x18	25	9	38	128	92
OH1417	17	14x18	25	9	38	127	109
OH1418	18	14x18	25	10	42	138	125
OH1419	19	14x18	25	10	42	137	145
OH1420	20	14x18	25	11	50	145	160
OH1421	21	14x18	25	11	50	158	190
OH1422	22	14x18	25	11	50	155	220
OH1423	23	14x18	25	13	53	156	250
OH1424	24	14x18	25	13	53	159	280
OH1425	25	14x18	25	13	53	163	320
OH1426	26	14x18	25	13	53	163	360
OH1427	27	14x18	30*	13	64	230	360
OH1428	28	14x18	30*	13	66	255	360
OH1429	29	14x18	30*	13	68	255	360
OH1430	30	14x18	35*	13	70	255	360
OH1431	31	14x18	35*	13	70	255	360
OH1432	32	14x18	35*	13	70	255	360
OH1433	33	14x18	40*	13	75	360	360
OH1434	34	14x18	40*	13	78	360	360
OH1435	35	14x18	40*	13	80	365	360
OH1436	36	14x18	40*	13	80	365	360
OH1437	37	14x18	45*	13	83	440	360
OH1438	38	14x18	45*	13	85	440	360
OH1439	39	14x18	45*	13	85	435	360
OH1440	40	14x18	50*	13	90	430	360
OH1441	41	14x18	50*	13	90	430	360
OH1442	42	14x18	50*	13	93	430	360
OH1443	43	14x18	50*	13	95	480	360
OH1444	44	14x18	50*	13	98	550	360
OH1445	45	14x18	50*	13	100	600	360
OH1446	46	14x18	50*	13	100	595	360
OH1447	47	14x18	50*	13	102	595	360



## Metric

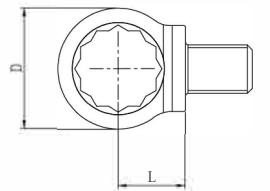
Part#	Open Size	Shank Size	L mm	H mm	D mm	Weight g	Max. Torque Nm
OH1448	48	14x18	50*	13	104	595	360
OH1449	49	14x18	50*	13	106	610	360
OH1450	50	14x18	55*	13	106	610	360
OH1451	51	14x18	55*	13	106	600	360
OH1452	52	14x18	55*	13	110	600	360
OH1453	53	14x18	55*	13	112	600	360
OH1455	55	14x18	55*	13	116	585	360
OH1456	56	14x18	60*	13	120	650	360
OH1457	57	14x18	60*	13	121	650	360
OH1460	60	14x18	60*	13	121	650	360
OH1461	61	14x18	60*	13	121	640	360
OH1462	62	14x18	60*	13	122	640	360
OH1465	65	14x18	65*	13	126	680	360
OH1466	66	14x18	65*	13	128	680	360
OH1468	68	14x18	70*	13	130	690	360
OH1470	70	14x18	70*	13	135	700	360
OH1472	72	14x18	70*	13	135	690	360
OH1475	75	14x18	75*	13	142	720	360
OH1478	78	14x18	75*	13	150	730	360
OH1480	80	14x18	80*	13	155	750	360
OH1485	85	14x18	80*	13	155	750	360
OH1488	88	14x18	90*	13	160	775	360
OH1490	90	14x18	90*	13	165	800	360
OH2417	17	24x32	35	25	62	650	1200
OH2419	19	24x32	35	25	65	680	1200
OH2420	20	24x32	35	25	66	680	1200
OR2422	22	24x32	35	25	68	700	1200
OH2424	24	24x32	35	25	70	715	1200
OH2425	25	24x32	35	25	70	715	1200
OH2426	26	24x32	35	25	70	715	1200
OH2427	27	24x32	35	25	72	718	1200
OH2428	28	24x32	35	25	72	719	1200
OH2430	30	24x32	35	25	75	720	1200
OH2432	32	24x32	35	25	76	725	1200
OH2434	34	24x32	40*	25	78	730	1200
OH2436	36	24x32	40*	25	80	735	1200
OH2438	38	24x32	45*	25	91	809	1200
OH2441	41	24x32	50*	25	95	925	1200
OH2445	45	24x32	50*	25	100	1000	1200
OH2446	46	24x32	50*	25	100	1000	1200
OH2448	48	24x32	50*	25	104	1100	1200
OH2450	50	24x32	55*	25	106	1150	1200
OH2455	55	24x32	55*	25	119	1300	1200
OH2457	57	24x32	55*	25	120	1330	1200
OH2460	60	24x32	60*	25	121	1330	1200
OH2465	65	24x32	65*	25	130	1337	1200
OH2467	67	24x32	70*	25	130	1415	1200
OH2470	70	24x32	70*	25	132	1620	1200
OH2475	75	24x32	75*	25	150	1650	1200
OH2727	27	27x36	50*	28	90	1250	3000
OH2730	30	27x36	50*	28	95	1295	3000
OH2732	32	27x36	50*	28	95	1295	3000
OH2734	34	27x36	50*	28	100	1330	3000
OH2736	36	27x36	50*	28	100	1335	3000
OH2738	38	27x36	50*	28	107	1338	3000
OH2741	41	27x36	50*	28	107	1440	3000
OH2742	42	27x36	50*	28	107	1440	3000
OH2745	45	27x36	50*	28	107	1440	3000
OH2746	46	27x36	50*	28	114	1445	3000
OH2750	50	27x36	55*	28	118	1450	3000
OH2755	55	27x36	55*	28	124	1455	3000
OH2760	60	27x36	60*	28	130	1460	3000
OH2761	61	27x36	65*	28	131	1462	3000
OH2765	65	27x36	65*	28	136	1462	3000
OH2770	70	27x36	70*	28	142	1465	3000
OH2775	75	27x36	75*	28	148	1780	3000
OH2780	80	27x36	80*	28	158	2600	3000
OH2785	85	27x36	85*	28	164	2850	3000
OH2790	90	27x36	90*	28	176	2900	3000
OH2795	95	27x36	95*	28	180	3000	3000

# Shank Drive Ring End / Shank Drive Open Ring End

## Shank Drive Ring End

Part#	Ring Size	Shank Size	L mm	H mm	D mm	Weight g	MaxTorque Nm
QH96	6	9x12	17.5	8	12	43	18
QH97	7	9x12	17.5	8	13	43	25
QH98	8	9x12	17.5	8	14	42	34
QH99	9	9x12	17.5	9	16	45	45
QH910	10	9x12	17.5	9	17	48	58
QH911	11	9x12	17.5	9	18.5	47	72
QH912	12	9x12	17.5	12	20	54	89
QH913	13	9x12	17.5	12	22	53	105
QH914	14	9x12	17.5	12	23	52	125
QH915	15	9x12	17.5	12	24	54	145
QH916	16	9x12	17.5	13	26	56	160
QH917	17	9x12	17.5	13	27	55	160
QH918	18	9x12	17.5	13	28.5	58	160
QH919	19	9x12	17.5	13	30	57	160
QH920	20	9x12	17.5	13	33	68	160
QH921	21	9x12	17.5	13	33	68	160
QH922	22	9x12	17.5	13	34.5	73	160
QH924	24	9x12	25*	13	37.5	80	160
QH927	27	9x12	25*	13	41.5	80	160
QH930	30	9x12	25*	13	45	85	160
QH936	36	9x12	30*	13	52	90	160
QH941	41	9x12	35*	13	61	90	160
QH1410	10	14x18	25	11	16	95	58
QH1411	11	14x18	25	11	18.5	115	75
QH1412	12	14x18	25	11	21.5	125	89
QH1413	13	14x18	25	11	21.5	125	105
QH1414	14	14x18	25	11	23	124	125
QH1415	15	14x18	25	11	24	123	150
QH1416	16	14x18	25	12	26	128	175
QH1417	17	14x18	25	12	27	127	200
QH1418	18	14x18	25	12	28.5	133	230
QH1419	19	14x18	25	12	30.5	138	260
QH1420	20	14x18	25	15	33	148	290
QH1421	21	14x18	25	15	33	148	330
QH1422	22	14x18	25	15	34.5	154	360
QH1424	24	14x18	25	15	37.5	153	360
QH1425	25	14x18	25	15	40	160	360
QH1427	27	14x18	25	16	41.5	160	360

Part#	Ring Size	Shank Size	L mm	H mm	D mm	Weight g	MaxTorque Nm
QH1428	28	14x18	25	16	45	165	360
QH1430	30	14x18	25	16	45	165	360
QH1432	32	14x18	25	16	47.5	168	360
QH1434	34	14x18	30*	16	51	190	360
QH1436	36	14x18	30*	16	54	196	360
QH1438	38	14x18	33*	16	57	210	360
QH1441	41	14 x 18	35*	16	61	215	360
QH1442	42	14 x 18	33*	16	63	215	360
QH1446	46	14x18	40*	16	68	225	360
QH1450	50	14 x 18	40*	16	70	230	360
QH1455	55	14 x 18	45*	16	76	250	360
QH1460	60	14x18	45*	16	84	255	360
QH2424	24	24x32	35	25	65	880	1200
QH2427	27	24x32	35	25	68	910	1200
QH2430	30	24x32	35	25	72	945	1200
QH2432	32	24x32	35	25	74	961	1200
QH2434	34	24x32	35	25	76	977	1200
QH2436	36	24x32	40*	25	80	1075	1200
QH2438	38	24x32	40*	25	80	1053	1200
QH2441	41	24x32	45*	25	80	1059	1200
QH2446	46	24x32	45*	25	84	1074	1200
QH2450	50	24x32	50*	25	98	1315	1200
QH2455	55	24x32	55*	25	105	1533	1200
QH2460	60	24x32	60*	25	110	1642	1200
QH2465	65	24x32	65*	25	128	1900	1200
QH2470	70	24x32	65*	25	128	1915	1200
QH2730	30	27x36	50*	28	70	1190	3000
QH2732	32	27x36	50*	28	70	1213	3000
QH2734	34	27x36	50*	28	75	1235	3000
QH2736	36	27x36	50*	28	75	1225	3000
QH2738	38	27x36	50*	28	80	1263	3000
QH2741	41	27x36	50*	28	80	1265	3000
QH2746	46	27x36	50*	28	86	1270	3000
QH2750	50	27x36	50*	28	98	1603	3000
QH2755	55	27x36	55*	28	105	1771	3000
QH2760	60	27x36	60*	28	110	1874	3000
QH2765	65	27x36	60*	28	118	2050	3000
QH2770	70	27x36	65*	28	128	2322	3000



## Shank Drive Open Ring End

Part#	Ring Size	Open Size	Shank Size	L mm	H mm	D mm	Weight g	MaxTorque Nm
QOH910	10	7.1	9x12	17.5	12	22	63	12
QOH911	11	8.6	9x12	17.5	12	22	62	16
QOH912	12	9.0	9x12	17.5	12	24	61	25
QOH913	13	10.0	9x12	17.5	12	25	63	28
QOH914	14	11.0	9x12	17.5	13	27	62	31
QOH916	16	13.0	9x12	17.5	13	30	69	46
QOH917	17	14.0	9x12	17.5	13	31.5	68	53
QOH918	18	14.8	9x12	25*	13	33	77	65
QOH919	19	15.8	9x12	25*	13	34.5	82	74
QOH921	21	16.2	9x12	25*	13	35	92	95
QOH922	22	17.0	9x12	25*	13	37	95	105
QOH924	24	18.0	9x12	25*	13	40	97	145
QOH927	27	21.0	9x12	30*	13	44	105	160
QOH930	30	22.0	9x12	35*	13	48	115	160
QOH932	32	24.0	9x12	35*	13	51	120	160
QOH1413	13	10.0	14x18	25	12	25	135	28
QOH1414	14	11.0	14x18	25	13	27	140	31
QOH1415	15	11.5	14x18	25	13	29	145	38
QOH1416	16	13.0	14x18	25	13	30	145	46
QOH1417	17	14.0	14x18	25	13	31.5	145	53
QOH1418	18	14.8	14x18	25	15	33	150	65
QOH1419	19	15.8	14x18	25	15	34.5	150	74
QOH1421	21	16.2	14x18	25	16	35.5	155	100
QOH1422	22	17.0	14x18	25	16	37	155	115

Part#	Ring Size	Open Size	Shank Size	L mm	H mm	D mm	Weight g	MaxTorque Nm
QOH1424	24	18.5	14 x 18	25	16	40	155	145
QOH1427	27	22.0	14x18	30*	16	44	155	160
QOH1430	30	22.0	14x18	35*	16	48	155	180
QOH1432	32	24.0	14x18	35*	16	51	155	200
QOH1434	34	25.0	14x18	40*	16	55	160	260
QOH1436	36	27.0	14x18	40*	16	58	165	260
QOH1438	38	28.0	14x18	45*	16	61	175	260
QOH1439	41	30.0	14x18	50*	16	65	180	260
QOH1446	46	31.0	14x18	50*	16	71	190	260
QOH1450	50	34.0	14x18	55*	16	77	195	260
QOH2419	19	15.8	24x32	35	25	42	627	600
QOH2430	30	22.0	24x32	35	25	67	755	600
QOH2432	32	24.0	24x32	35	25	69	755	600
QOH2434	34	25.0	24x32	40*	25	71	790	600
QOH2436	36	27.0	24x32	40*	25	73.5	830	600
QOH2438	38	28.0	24x32	45*	25	80	922	600
QOH2441	41	30.0	24x32	50*	25	83	980	600
QOH2446	46	32.0	24x32	50*	25	92	970	600
QOH2450	50	34.0	24x32	55*	25	98	1180	600
QOH2455	55	39.0	24x32	55*	25	106	1160	600
QOH2730	30	22.0	27x36	50*	28	75	1250	1200
QOH2732	32	24.0	27x36	50*	28	75	1250	1200
QOH2736	36	27.0	27x36	50*	28	80	1350	1200

