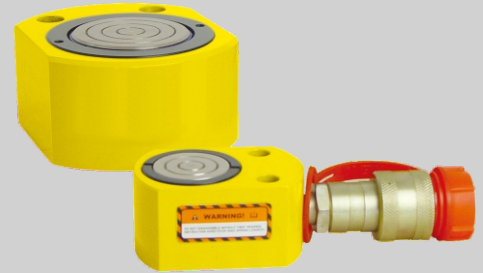




### Hydraulic Cylinders

#### RSM-Series Flat Low Height Cylinder

Compact, flat design for use where other cylinders will not fit.  
High capacity have handle for easy carrying.  
Single acting with spring return.



Model No.	Capacity (T)	Lifting.H (mm)	Min.H (mm)	Cylinder Dia. (mm)	Oil capacity (cm <sup>3</sup> )	Piston Dia. (mm)	Weight (kgs)
RSM-50	5T	6	32	58 ' 41	4	25.4	
RSM-100	10T	12	42	82 ' 55	18	38.1	1.5
RSM-200	20T	11	51	101 ' 76	32	50.8	3.2
RSM-300	30T	13	58	117 ' 95	55	63.4	5
RSM-500	50T	16	66	140 ' 114	99	69.8	7.5
RSM-750	75T	16	79	165 ' 139	164	82.6	11.3
RSM-1000	100T	16	85	178 ' 153	203	92.2	18
RSM-1500	150T	16	100	215 ' 190	317	114.3	36

#### RCS-Series Short Cylinder

Light weight low profile design for use in confined spaces.  
Grooved plunger end with threaded holes for mounting tilt saddles.



Model No.	Capacity (T)	Lifting.H (mm)	Min.H (mm)	Cylinder Dia. (mm)	Oil capacity (cm <sup>3</sup> )	Piston Dia. (mm)	Weight (kgs)
RCS-101	10T	38	88	70	55	38	4.1
RCS-201	20T	45	98	92	127	50	5
RCS-302	30T	62	117	101	255	65	6.8
RCS-502	50T	60	112	124	381	70	10.9
RCS-1002	100T	57	141	165	756	90	22.7
RCS-1502	150T	51	162	205	1025	138	42.1



## Single-Acting Cylinders

Single acting by a heavy duty spring return. Collar threads, plunger threads and base mounting holes enable easy fixturing (on most models). Designed for use in all positions (Horizontal and Vertical).



Model No.	Capacity (T)	Lifting.H (mm)	Min.H (mm)	Cylinder Dia. (mm)	Oil capacity (cm <sup>3</sup> )	Piston Dia. (mm)	Weight (kgs)
RC-50	5T	16	41	38	10	25.4	1.0
RC-51	5T	25	110	38	16	25.4	1.0
RC-53	5T	76	165	38	50	25.4	1.5
RC-55	5T	127	215	38	83	25.4	1.9
RC-57	5T	177	273	38	115	25.4	2.4
RC-59	5T	232	323	38	151	25.4	2.8
RC-101	10T	26	89	57	38	38.1	1.8
RC-102	10T	54	121	57	78	38.1	2.3
RC-104	10T	105	171	57	151	38.1	3.3
RC-106	10T	156	247	57	225	38.1	4.4
RC-108	10T	203	298	57	292	38.1	5.4
RC-1010	10T	257	349	57	370	38.1	6.4
RC-1012	10T	304	400	57	441	38.1	6.8
RC-1014	10T	356	450	57	516	38.1	8.2
RC-151	15T	25	124	69	51	41.4	3.3
RC-152	15T	51	149	69	104	41.4	4.1
RC-154	15T	101	200	69	207	41.4	5.0
RC-156	15T	152	271	69	309	41.4	6.8
RC-158	15T	203	322	69	412	41.4	8.2
RC-1510	15T	254	373	69	516	41.4	9.5
RC-1512	15T	305	423	69	619	41.4	10.9
RC-1514	15T	356	474	69	723	41.4	11.8
RC-251	25T	26	139	85	83	57.2	5.9
RC-252	25T	50	165	85	169	57.2	6.4
RC-254	25T	102	215	85	339	57.2	8.2
RC-256	25T	158	273	85	528	57.2	10.0
RC-258	25T	210	323	85	697	57.2	12.2
RC-2510	25T	261	374	85	863	57.2	14.1
RC-2512	25T	311	425	85	1033	57.2	16.3
RC-2514	25T	362	476	85	1202	57.2	17.7
RC-308	30T	209	387	101	880	57.2	18.1
RC-502	50T	51	176	127	384	79.5	15.0
RC-504	50T	101	227	127	727	79.5	19.1
RC-506	50T	159	282	127	1134	79.5	23.1
RC-5013	50T	337	460	127	2403	79.5	37.6
RC-756	75T	156	285	146	1601	95.2	29.5
RC-7513	75T	333	492	146	3427	95.2	59.0
RC-1006	95T	168	357	177	2239	104.9	59.0
RC-10010	95T	260	449	177	3466	104.9	72.6



### Single Acting Hollow Cylinders

#### RCH-Series Single Acting Hollow Cylinder

Hollow plunger design allows for both pull and push forces, single acting spring return. Collar threads for easy fixturing.



Model No.	Capacity (T)	Lifting.H (mm)	Min.H (mm)	Cylinder Dia. (mm)	Oil capacity (cm <sup>3</sup> )	Hollow Dia. (mm)	Weight (kgs)
RCH-120	12T	8	55	69	14	19.6	1.5
RCH-121	12T	42	120	69	75	19.6	2.8
RCH-123	12T	76	184	69	136	19.6	4.4
RCH-202	20T	49	162	98	150	26.9	7.7
RCH-206	20T	155	306	98	476	26.9	14.1
RCH-302	30T	64	178	114	298	33.3	10.9
RCH-306	30T	155	330	114	722	33.3	21.8
RCH-603	60T	76	247	159	626	53.8	28.1
RCH-606	60T	153	323	159	1259	53.8	35.4
RCH-1003	100T	76	254	212	1011	79	63

#### CLP-Series Short Pancake Locknut Cylinder

Extremely low height for use in confined areas.  
Safety lock nut for mechanical load holding.  
Overflow port functions as a stroke limiter.



Model No.	Capacity (T)	Lifting.H (mm)	Min.H (mm)	Cylinder Dia. (mm)	Oil capacity (cm <sup>3</sup> )	Weight (kgs)
CLP-602	60T	50	125	140	432	15
CLP-1002	100T	50	137	175	734	26
CLP-1602	160T	45	148	220	1040	44
CLP-2002	200T	45	155	245	1285	57
CLP-2502	260T	45	159	275	1650	74
CLP-4002	400T	45	178	350	2517	134
CLP-5002	520T	45	192	400	3287	189



## Double-Acting High Tonnage Cylinders

Double acting for push and pull. Safety valve in retract side of cylinder helps to prevent damage in case of accidental over-pressurization special bearing design withstands side load forces up to 10% of rated cylinder capacity without scoring.



Model No.	Capacity (T)	Lifting.H (mm)	Min.H (mm)	Cylinder Dia. (mm)	Oil capacity (cm <sup>3</sup> )	Piston Dia. (mm)	Weight (kgs)
CLRG-502	50T	50	162	130	385	70	17
CLRG-504	50T	100	212	130	770	70	20
CLRG-506	50T	150	262	130	1155	70	25
CLRG-508	50T	200	312	130	1540	70	36
CLRG-5010	50T	250	362	130	1924	70	31
CLRG-5012	50T	300	412	130	2309	70	34
CLRG-1002	100T	50	182	165	664	95	19
CLRG-1004	100T	100	232	165	1327	95	29
CLRG-1006	100T	150	282	165	1991	95	40
CLRG-1008	100T	200	332	165	2655	95	50
CLRG-10010	100T	250	382	165	3318	95	61
CLRG-10012	100T	300	432	165	3982	95	71
CLRG-1502	150T	50	196	205	993	114	39
CLRG-1504	150T	100	246	205	1986	114	52
CLRG-1506	150T	150	296	205	2978	114	65
CLRG-1508	150T	200	346	205	3971	114	78
CLRG-15010	150T	250	396	205	4964	114	92
CLRG-15012	150T	300	446	205	5957	114	105
CLRG-2002	200T	50	216	235	1330	133	55
CLRG-2006	200T	150	316	235	3989	133	91
CLRG-2008	200T	200	366	235	5000	133	110
CLRG-20012	200T	300	446	235	7977	133	146
CLRG-2502	250T	50	235	275	1832	165	89
CLRG-2506	250T	150	335	275	5497	165	136
CLRG-2508	250T	200	385	275	7200	165	170
CLRG-25012	250T	300	485	275	10993	165	207
CLRG-3002	300T	50	312	310	2281	197	184
CLRG-3006	300T	150	412	310	6843	197	232
CLRG-3008	300T	200	462	310	8900	197	270
CLRG-30012	300T	300	562	310	13685	197	303
CLRG-4002	400T	50	375	350	2800	216	270
CLRG-4006	400T	150	475	350	8399	216	330
CLRG-4008	400T	200	525	350	11500	216	380
CLRG-40012	400T	300	625	350	16797	216	421
CLRG-5002	500T	50	419	400	3653	248	401
CLRG-5006	500T	150	519	400	10959	248	480
CLRG-5008	500T	200	569	400	15630	248	510
CLRG-50012	500T	300	669	400	21918	248	599
CLRG-6002	600T	50	429	430	4276	267	474
CLRG-6006	600T	150	529	430	12829	267	565
CLRG-6008	600T	200	579	430	18009	267	620
CLRG-60012	600T	300	679	430	25659	267	701
CLRG-8002	800T	50	474	505	5861	317	741
CLRG-8006	800T	150	574	505	17644	317	868
CLRG-8008	800T	200	624	505	25000	317	950
CLRG-80012	800T	300	724	505	35286	317	1058
CLRG-10002	1000T	50	564	560	7329	343	1062
CLRG-10006	1000T	150	664	560	21986	343	1213
CLRG-10008	1000T	200	714	560	32896	343	1300
CLRG-100012	1000T	300	814	560	43972	343	1439